

Cello

Frontier Country Fair Band

Welcome to the Frontier Country Fair Band of the Nauvoo Pageant! The following is some general information for band participants. We thank you in advance for your dedication and service!

Purpose: The Band sets an 1840's ambiance during the Frontier Country Fair. It also provides the music for our guests to dance the round dance and waltz. The band is one of the featured venues in the Frontier Country Fair and is very popular for all ages. Many people are drawn to the band area to listen, visit and enjoy. The music is very simple and played in an 1840's style. Please do not play any other popular current music or drum rhythms while warming up. We want to preserve the 1840's theme. We play only the attached 10 songs and do not vary from them. The music has been chosen specifically to fit the overall experience of the Frontier Country Fair.

Band Start time is 6:55 PM! During your 1st week of pageant service you will perform each evening (Tuesday through Saturday) with the band. The band begins playing promptly at 6:55 PM each evening. Cast meeting is from 6-6:30 PM at the Stake Center which is about 4 blocks from the Fair site. Please leave the meeting immediately. Plan to arrive at the bandstand at 6:40 to begin tuning and be prepared to play at 6:55. It is critical for the band to begin playing at 6:55 as one of the main purposes of the band is to provide a musical backdrop for all of the activities. We know it will be a quick transition, but the band is essential for the ambiance and visitor's experiences at the Frontier Country Fair.



Where: The Band performs on an elevated stage (apx 4 feet high) west of the pageant stage. It has a vinyl roof for some protection from rain, but band members are in the direct sun part of the evening. We will stop playing if the rain gets to a point where it could damage instruments, but this is rare.

Instruments & Music: Band members will carry their instruments to the bandstand, perform, and then take their instruments to a safe place. We will have printed copies of the music for you. Meister Music in Keokuk is the only music store in the area. They have a wide variety of supplies and can even rent instruments. They are good friends of the Pageant. (319) 524-1183

Some places to store your instrument during the Pageant are:

- in your car
- in the south end of the Cousins tent
- in the security tent, south of the security trailer
- We can arrange to have your instrument locked in the Pageant Office (1/2 block South or Site)

Note: Instruments should not be left overnight at the Pageant site.

Tempo Notes: Most of the Tempos for the pieces are 120-130. Please be prepared to play the tunes at the top end of the stated tempo or even a little faster. "Boil 'Em Cabbage Down" is played as fast as the musicians can manage as a finale with speeds up to 250.

Final Thoughts: Come prepared to have a lot of fun. We don't expect to have a professional band. We are a "family band" and want you to come and have a great experience. We hope you will practice prior to your service, but remember to just do your best and know that it is an acceptable offering. Thank you again for your service. We look forward to another wonderful Pageant Season!

CELLO

1. ARKANSAS TRAVELER

$\text{♩} = 120-130$

Nauvoo Pageant - Frontier Country Fair

TRADITIONAL



CELLO

2. Boil 'Em Cabbage Down

J=120-250! Nauvoo Pageant - Frontier Country Fair

TRADITIONAL



Note: This piece is played throughout the evening as well as the last song of the night.

During the last playing of the song, the tempo begins at 120 and accelerates to as fast as the band can play which is approximately 250.

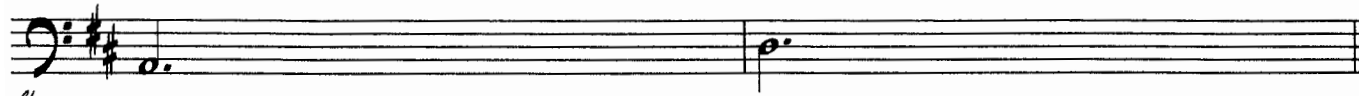
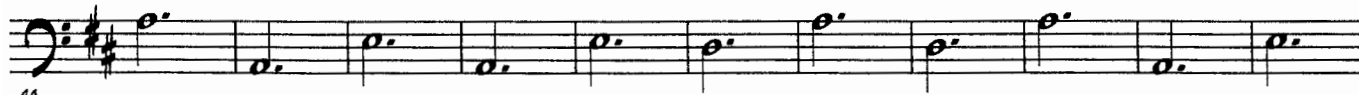
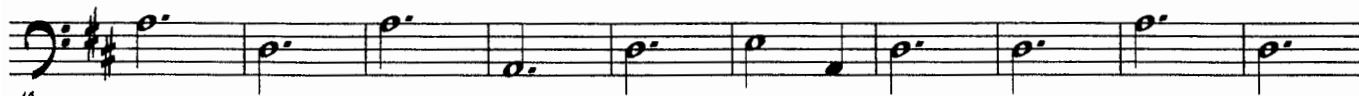
CELLO

4. COUNTRY WALTZ

$\text{♩} = 120$

Nauvoo Pageant - Frontier Country Fair

TRADITIONAL



CELLO

5. GOLDEN SLIPPERS

J=120-130

Nauvoo Pageant - Frontier Country Fair

TRADITIONAL



CELLO

7. IRISH WASHWOMAN

J=116-130

Nauvoo Pageant - Frontier Country Fair

TRADITIONAL

6

12

18

24

30

CELLO

8. RED WING

$\text{♩} = 120-130$

Nauvoo Pageant - Frontier Country Fair

TRADITIONAL

7

10

11

18

CELLO

9. SAILOR'S HORNPIPE

J=120-130

Nauvoo Pageant - Frontier Country Fair

TRADITIONAL



CELLO

10. TURKEY IN THE STRAW

$\text{♩} = 120-130$

Nauvoo Pageant - Frontier Country Fair

TRADITIONAL

